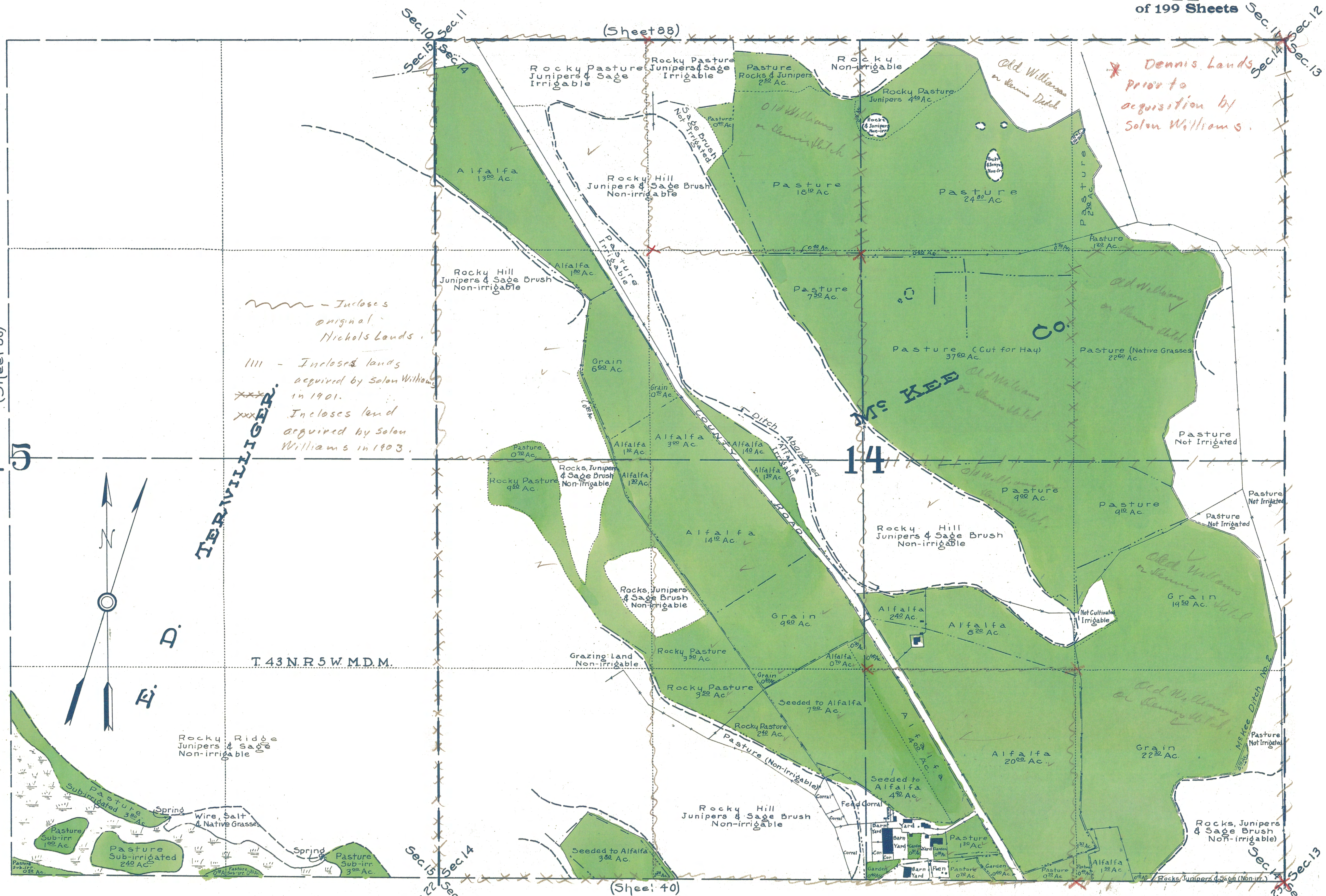


(Sheet 86)

15

41



TERVILLIGER.

~~~~~ - Incloses original Nichols Lands.

|||| - Inclosed lands acquired by Solon Williams in 1901.

xxxx - Incloses land acquired by Solon Williams in 1903.

\* Dennis Lands prior to acquisition by Solon Williams.

Old Williams on Dennis Ditch

Old Williams on Dennis Ditch

Old Williams on Dennis Ditch

Old Williams on Dennis Ditch

STATE OF CALIFORNIA  
 DEPARTMENT OF PUBLIC WORKS  
 DIVISION OF WATER RIGHTS  
**LANDS IRRIGATED FROM SHASTA RIVER  
 AND TRIBUTARIES**  
**SISKIYOU COUNTY CALIFORNIA**  
 SHOWN BY A  
**PLANE TABLE SURVEY**

M.D. 5327

SCALE 1" = 300'

1925