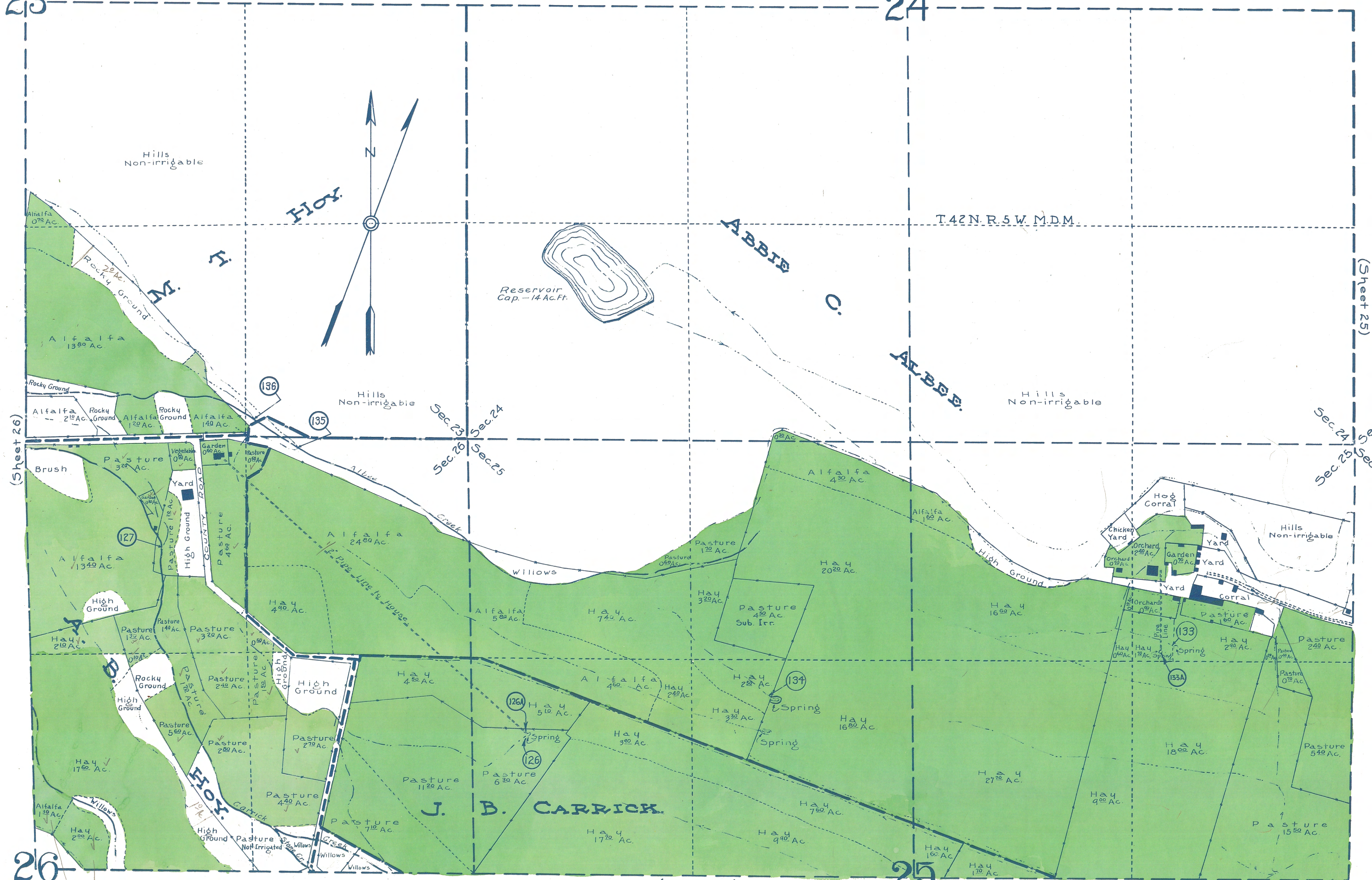


23

24



26

25

(Sheet 22)

STATE OF CALIFORNIA
DEPARTMENT OF PUBLIC WORKS
DIVISION OF WATER RIGHTS

M.D. 5327

**LANDS IRRIGATED FROM SHASTA RIVER
AND TRIBUTARIES
SISKIYOU COUNTY CALIFORNIA**

SHOWN BY A
PLANE TABLE SURVEY

SCALE 1" = 300 FT.

1923

27